

POS Printer Ethernet Interface User's Manual

1、 Function Summary

The interface board which is used for POS Printer, is the internet interface. It can make the printer connect the ethernet.

2、 Access Method

The Interface board have two interfaces, the one connect the serial or parallel interface of POS printer, it is the TTL interface standard, the other is the 10Base-T/100Base-Tx, automatically adapt Ethernet Interface, it may work under the Full-duplex or half-duplex mode.



3、 Agreement Support

Ethernet 802.3 agreement, the TCP、 UDP、 ICMP、 IP、 ARP、 HTTP、 printing agreement LP/LPR is the top agreement.

4、 Communications Connection

The interface board support the HTTP agreement, users may use the IE to visit the interface board through internet, then may receive the information of interface board ,and set the parameter of interface board.

About the interface board, the foremost IP address information, as follows:

IP: 192.168.1.114

NetMask: 255.255.255.0

HTTP server, the port No. is 80.

The software support the ICMP agreement, users may test the connection state by the PING order, after connected normally. For Example: ping 192.168.1.114, if the state is normally, show that the network communication is normally.

```
Pinging 192.168.1.114 with 32 bytes of data:
Reply from 192.168.1.114: bytes=32 time=1ms TTL=60
Reply from 192.168.1.114: bytes=32 time<1ms TTL=60
Reply from 192.168.1.114: bytes=32 time<1ms TTL=60
Reply from 192.168.1.114: bytes=32 time<1ms TTL=60

Ping statistics for 192.168.1.114:
    Packets: Sent = 4, Received = 4, Lost = 0 (0% loss),
    Approximate round trip times in milli-seconds:
        Minimum = 0ms, Maximum = 1ms, Average = 0ms
```

If display the error, please check the network line that if it connect the printer normally, and ensure that the host computer's IP address and the network printer's IP address is in the same network segment. Whether the network printer' IP address is right or not.

```
Pinging 192.168.1.114 with 32 bytes of data:
Request timed out.
Request timed out.
Request timed out.
Request timed out.

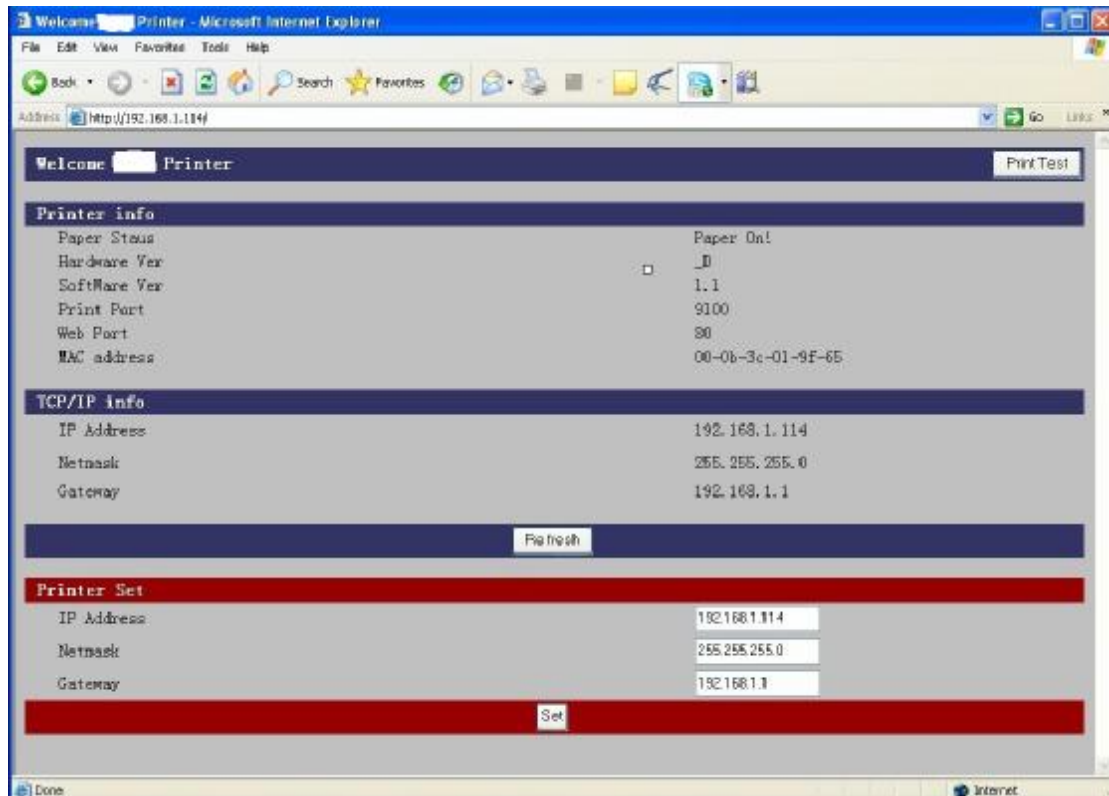
Ping statistics for 192.168.1.114:
    Packets: Sent = 4, Received = 0, Lost = 4 (100% loss),
```

5、 Use the IE

Open your IE, then key in the corresponding IP address in the address box, for example: <http://192.168.1.114>

If connect normally, you can see the corresponding information about the interface board by the IE.

You might key in the information which you needed to set the parameter of interface board.



Notice: After you changed the interface board information, please remember the new interface board information. If the information lost, please refer to the recovering item in attachment.

Printing (Test) Output

1、System Self-test :

When the printer don't print the date, please click the button of interface board, and approximately keep 3 seconds, then the interface board will send the date to the printer, the date will display the interface board information.



2、 WEB Print The Test Paper

If the users connect the printer normally, users may log in the printer by the WEB, The WEB will display the corresponding information, included the function of printing test. The users might press the (print button) to print the interface board information in the WEB server, the printing content is the parameter of interface board.



```
-----start-----
Welcome
Port checkout
The port info

Hardware Ver :_D
Software ver :1.1

Net parameter
IP address  :192.168.1.114
netmask    :255.255.255.0
gateway    :192.168.1.1

Server port
Print server :9100
Web server  :80

Other info
MAC address  :00-0b-3c-01-9f-65

-----End-----
```

3、 Driver Printing

Install the POS Printer driver, we provide the driver (the process of installing, please refer to the instruction), after installed successfully, the last step set the network, two parameters need to set, one is setting the IP address of network printer (please key in corresponding printer's IP address), another is setting the port No. about the printing service (Default 9100) .

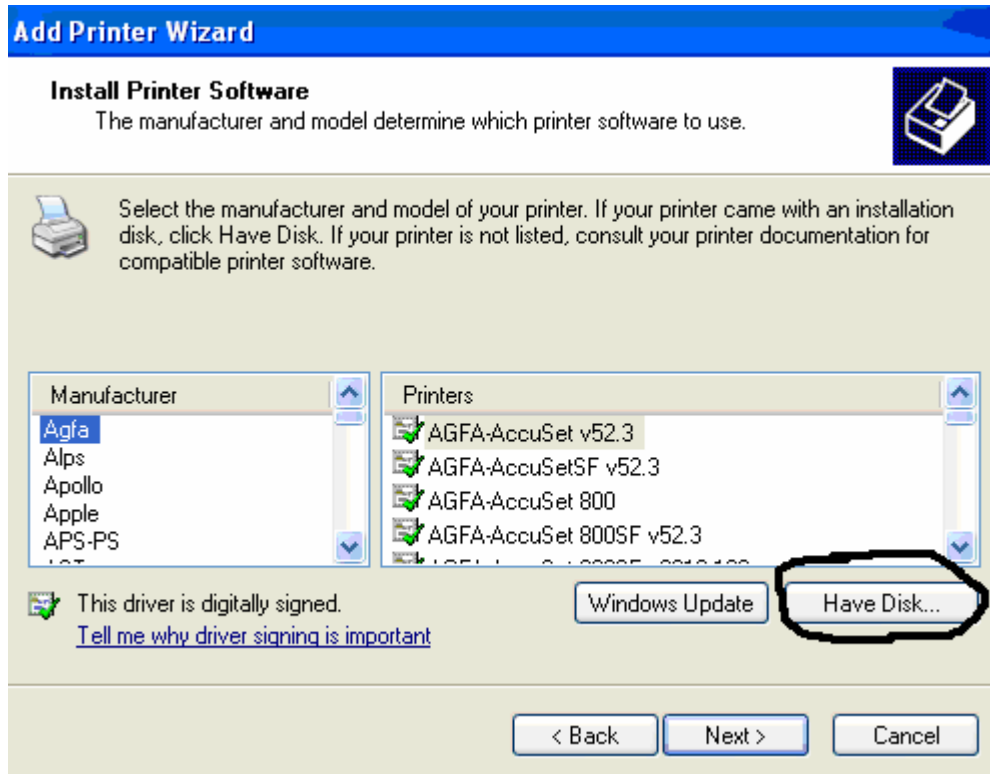
After set rightly, the users may print the test paper by the host computer, may directly print the date which needed too. The method is the same as other interface printer.

4、 Install Driver:

The installation method is same with other interface printers for the USB interface printer. The user only needs to select the port after the printer is installed.

4.1 In the add hardware wizard, choose to add hardware, and choose the local printer(needn't detect automatically).

4.2 Please choose the "parallel interface" from the port. Choose the installation method, click the "Have Disk".

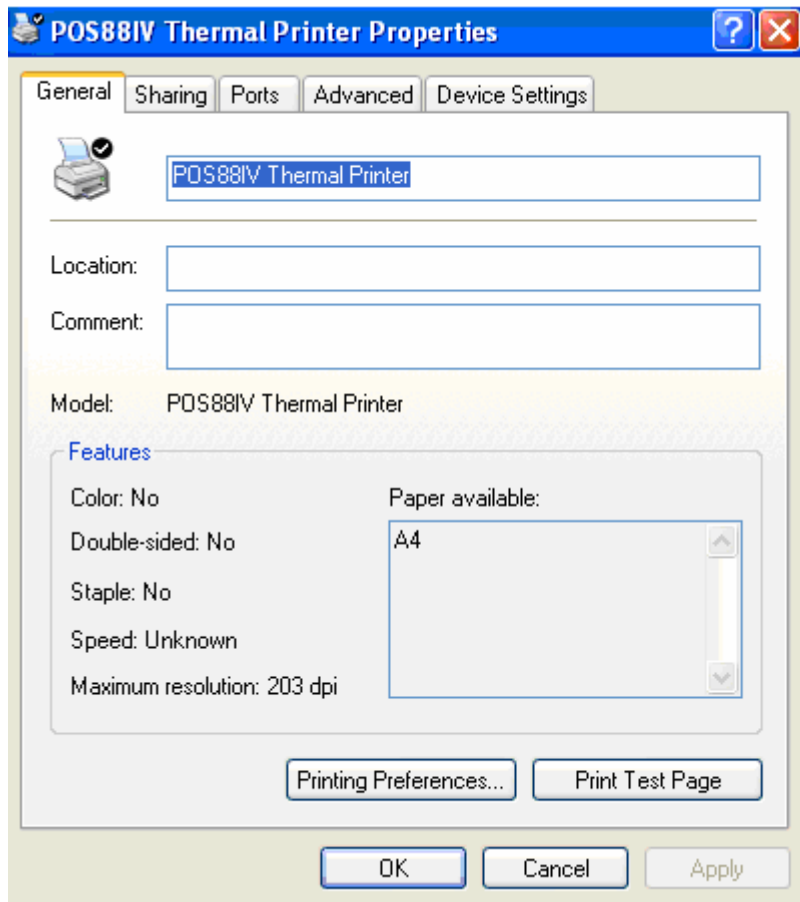


4.3 Choose the printer driver (Win2k/WinXP), according to the user's system.

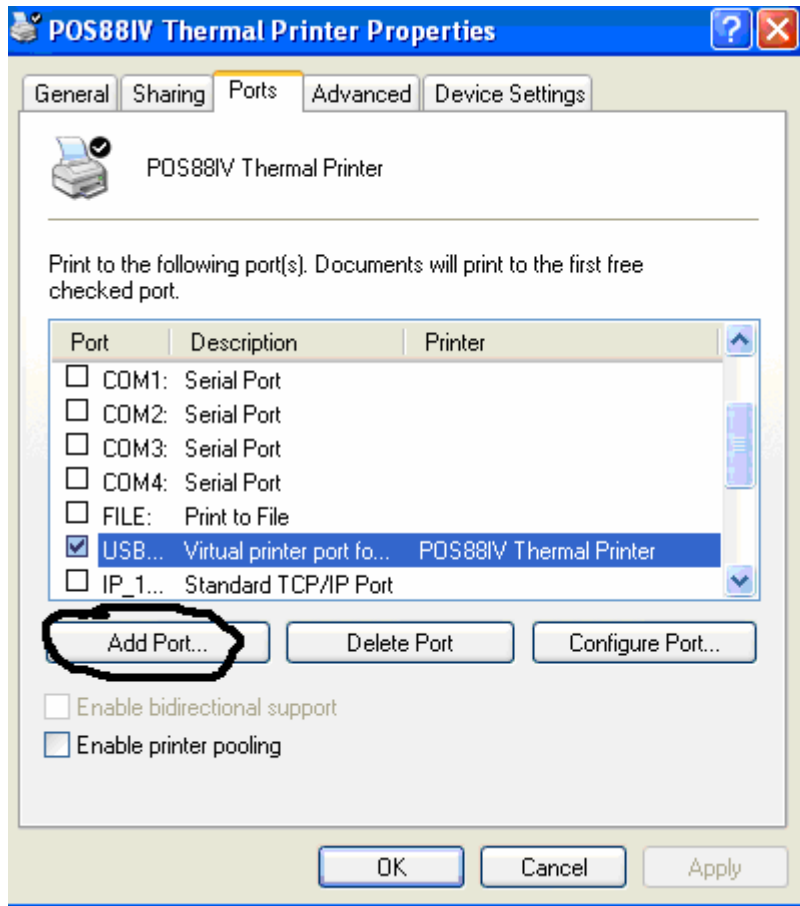
4.4 Finish installation (needn't printing test)

5、Set Network Printer

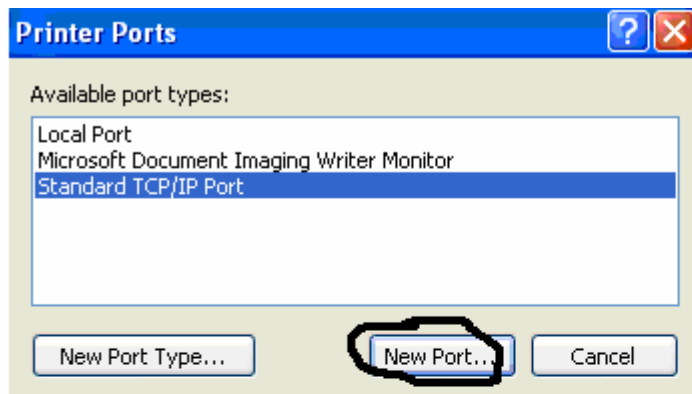
5.1 After finished to install the driver successfully, choose the "Properties" (when the user see the printer ico, click the right key), then choose the "Ports".



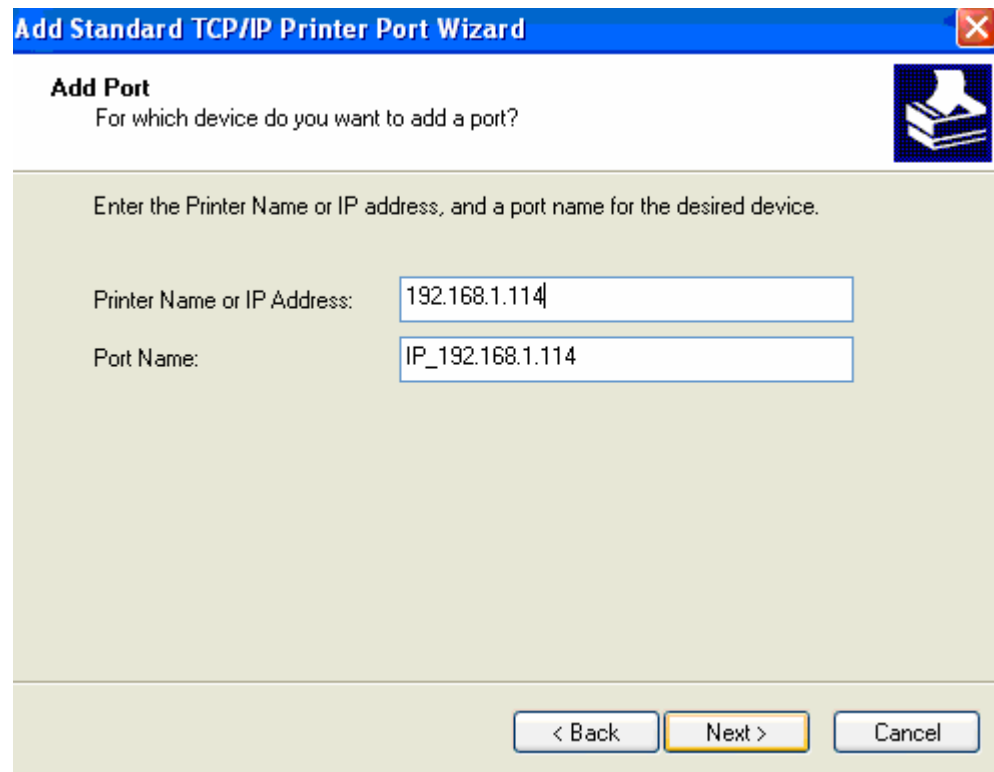
5.2 Add Port



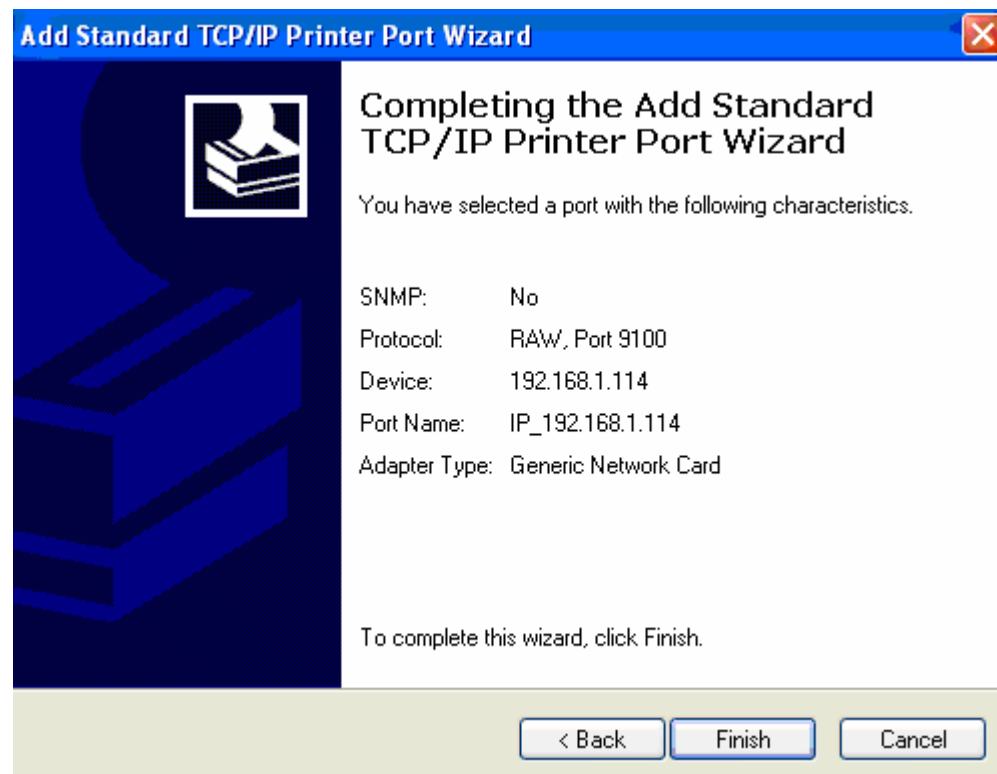
5.3 Choose the TCP/IP agreement item in the dialog box.



5.4 Choose “New Port”, then key in the network printer’s IP address in the dialogue box, for example: 192.168.1.114 (Default) .



5.5 Other setting may choose the default, then finish the installation.



The setting information can be changed when you needed. Click the “Properties”,

then choose “Ports”, next choose the “Port Settings”, finally key in the corresponding parameter which the users needed.

The screenshot shows a Windows-style dialog box titled "Configure Standard TCP/IP Port Monitor". It has a "Port Settings" tab selected. The "Port Name" field is filled with "IP_192.168.1.114". The "Printer Name or IP Address" field is filled with "192.168.1.114". In the "Protocol" section, the "Raw" radio button is selected. In the "Raw Settings" section, the "Port Number" field is filled with "9100". In the "LPR Settings" section, the "Queue Name" field is empty, and the "LPR Byte Counting Enabled" checkbox is unchecked. In the "SNMP Status Enabled" section, the checkbox is unchecked, the "Community Name" field is filled with "public", and the "SNMP Device Index" field is filled with "1". At the bottom right, there are "OK" and "Cancel" buttons.

Printer setting is finished, now began to print !

6、 Set the network printer interface

Key in the network printer's IP address in the IE address box, then the website is opened (if don't know the IP address, may print output by the button on the interface board. The detailed step as follows: click the button and keep 3-4 seconds, loose the button, the printer will be output the IP address.), then key in the corresponding date in the printer's setting box. Finally, click the “Set” button.

